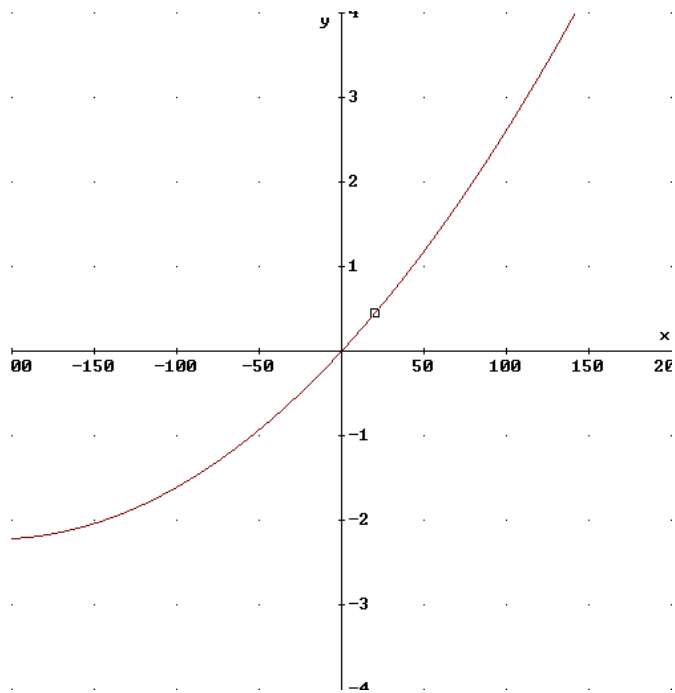
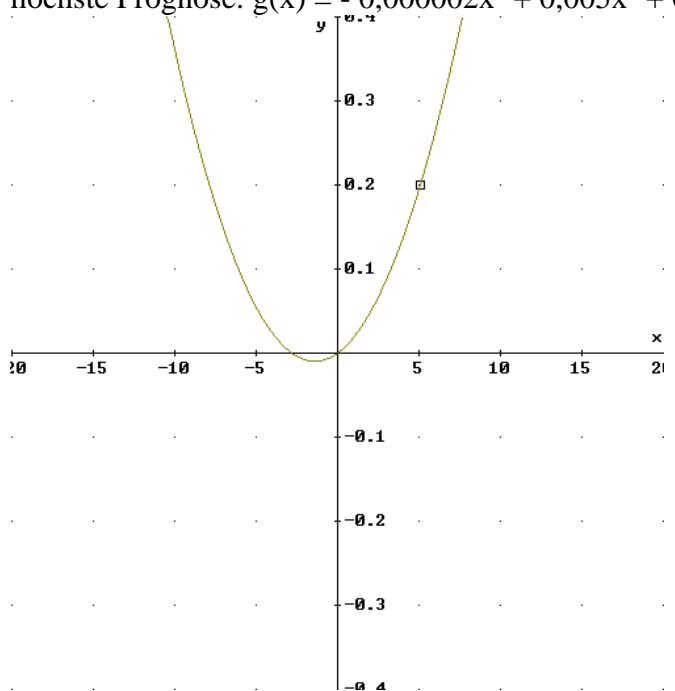


Temperaturerhöhung:

Niedrigste Prognose gegeben durch  $f(x) = 0,00005x^2 + 0,02109x$

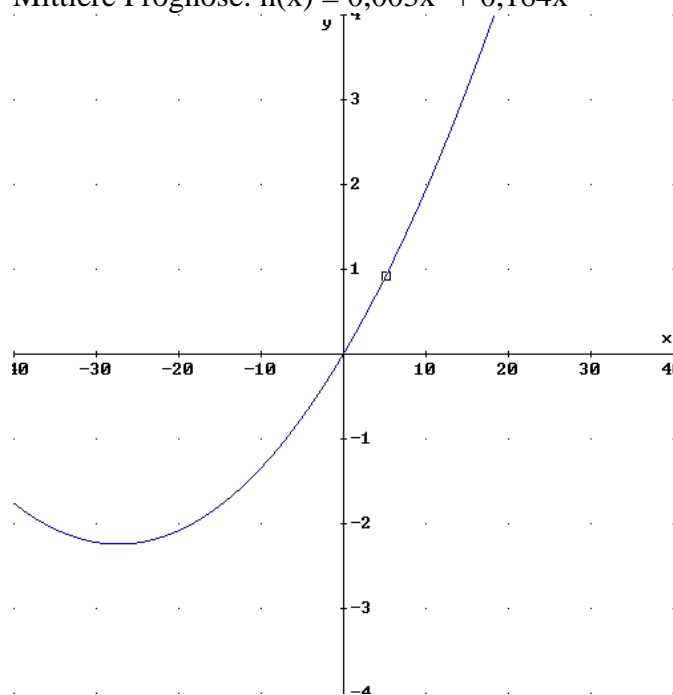


höchste Prognose:  $g(x) = -0,000002x^3 + 0,005x^3 + 0,01402x$



Meeresspiegelanstieg:

Mittlere Prognose:  $h(x) = 0,003x^2 + 0,164x$



Hohe Prognose:  $i(x) = 0,003x^2 + 0,502x$

